

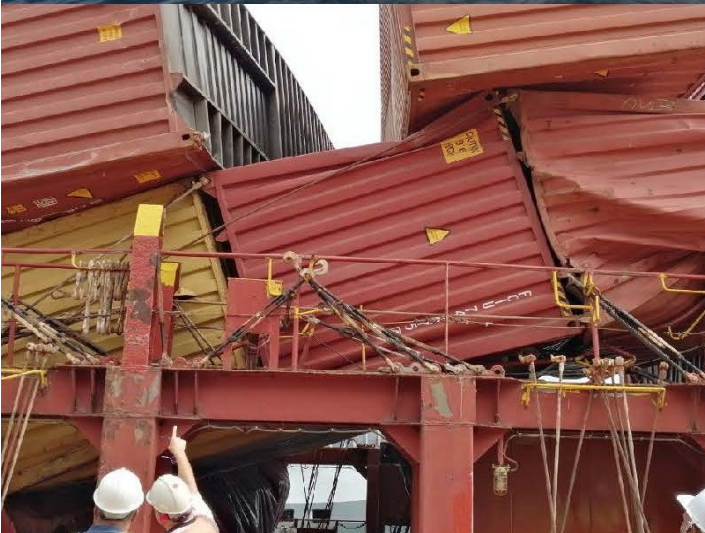


**Marine Consultants & Surveyors**



# Capability Statement

## September 2022



Draft Surveying

Trimming

On/Off Hire Surveys

Bunker Quantity Surveys

Prehold Inspections

Mock Port State Control Inspections

Flag State—Malta and Marshall Islands

P&I Surveys

Loading Inspection Reports

Ship Safety Inspections

Small Craft

\* insurance Valuations

\* Damage Surveys

\* Project Management

\* New Builds

\* Periodic Surveys

Background	2	One of the oldest marine surveying firms in the Gladstone region, founded by Captain Steve Beale and operating as Rodds Bay Maritime Pty Ltd for over 20 years. In 2015 the company was amalgamated into the MIPEC group of companies, and the name was changed to MIPEC Marine Consultants & Surveyors (MCS). In 2018 after the untimely death of the founder, Captain Steve Beale, the MIPEC group was purchased by Total AMS Group Pty Ltd (TAMS), a Perth based company. In September 2019 MIPEC Marine Consultants & Surveyors was sold by TAMS and purchased by Captain Olav Castellino who continues to operate and expand the company.
Accreditations	2	
MIPEC Today	3	
Objectives	3	
Small Craft Services	3	
Bulker Services	4	
Consulting	5	

MIPEC MCS is based in Gladstone, Queensland, Australia and encompasses to Townsville in the north and Urangan to the South. We recently opened an office in Karratha, Western Australia where one full time surveyor is located. We are part of a group of companies that have been conducting marine surveying for over 25 years and can also service ports in Brisbane, Melbourne, Newcastle, Port Botany, Port Kembla, Adelaide and Fremantle.

MIPEC MCS is committed to offering multidiscipline services to the marine industry Australia wide. MIPEC MCS, in association with our other businesses, has a team of 14 surveyors with seafaring experience, who are Master Mariners and Marine Engineer.

Accreditations

MIPEC MCS holds accreditation to:

- ISO 9001:2015 Quality Management System
- ISO 14001:2015 Environmental Management System
- ISO 45001:2018 Occupational Health & Safety Management System



Our marine surveyors are Certified Commercial Marine Surveyors and members of the Australasian Institute of Marine Surveyors (AIMS), conducting surveys under the codes of practice, ethics and conduct as set out by the Institute.



MIPEC MCS has 10 full time employees, 9 of which are based in Gladstone Queensland with 1 in Karratha, Western Australia. Due to its size MIPEC MCS can safely deliver services through a roster based fatigue management system.

MIPEC MCS has an excellent safety record and is committed to safe work practices in accordance with local, national and international requirements. We have no recorded LTI's,

## Objectives

### Objectives:

- Operate in accordance with all environmental, quality and safety legislation
- Nil environmental incidents
- Zero Fatalities or Loss Time Injuries
- Prompt customer response
- Competitive pricing
- Provide experienced professional marine surveyors with seagoing experience

## Small Craft Services

### Services:

Recreational/Commercial Vessels:

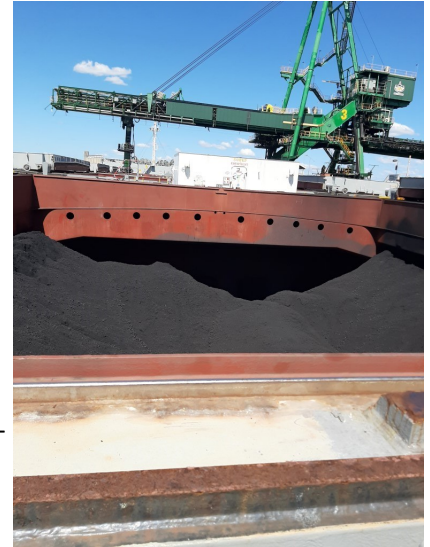
We provide a complete range of survey reports for both recreational and commercial vessels including but not limited to:

- Insurance Valuations
- Damage Surveys
- Pre purchase inspections and valuations
- New builds including project management
- On/Off Hires
- Periodic Surveys
- Accredited DCV Surveyor in categories  
g, h, l, j, k, l, n, o
- Towage planning and consultation
- Advice on all AMSA requirements



## Cargo:

- Terminal Representatives —have been providing end to end load mastering services to the Gladstone Ports Corporation and Rio Tinto Yarwun for over 10 years. Reducing the risk exposure for terminals through development of strategic programs targeting efficient ship loading/discharge, reduced delays, improved ship/shore interface stakeholder understanding and engagement.
- Draught Surveys—accurate establishment and reporting of loaded quantities and distribution of dry bulk cargoes.
- Quantity Surveys of liquid bulk cargoes, including Coogee Chemicals.
- Cargo—loading and discharge including general, break-bulk/project and container packed.



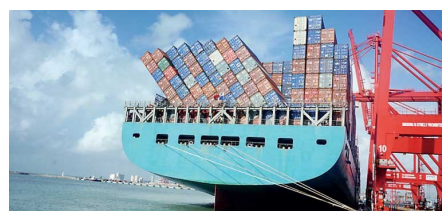
## Inspection:

- Accredited Fitness to Load grain surveyors
- Cargo Hold—preloading suitability and advisory surveys. Can be conducted at berth or anchorage.
- Oils/gas/chemical tanker—cargo tank inspection and certification.
- Project Cargo, heavy lift—in stow condition, damage, lashing.
- Marine Warranty Surveys
- On/Off Hire—establish and document condition at time of delivery or redelivery for short or long term chartering, lease or hire.
- Bunker surveys
- Flag State Inspections for Malta and Marshall Islands.
- Pre AMSA Survey, including assisting Master during AMSA inspection.
- Vessel Audits
- Pre purchase inspections
- Pure Car Carrier Vehicle Surveys
- Ro/Ro inspections
- Sample witnessing



## P&I Clubs/Insurers:

- Cargo
- Hulls
- Machinery
- Damage



## Consulting


- Ship/terminal interface and operations including but not limited to:
  - \* improvements and efficiency planning for cargo loading/unloading
  - \* infrastructure maintenance
  - \* expansion planning
- Expert Witness
- Investigations


## Contact

### MIPEC Marine Consultants & Surveyors

#### **Head Office:**


PO Box 35, Gladstone Q 4680

 07 4976 9666

 [surveyors@mipecmcs.com.au](mailto:surveyors@mipecmcs.com.au)

#### **Karratha Office:**

PO Box 45, Karratha WA 6071

 0484 377 044

 [mcsadmin@mipecmcs.com.au](mailto:mcsadmin@mipecmcs.com.au)



[www.mipecmcs.com.au](http://www.mipecmcs.com.au)